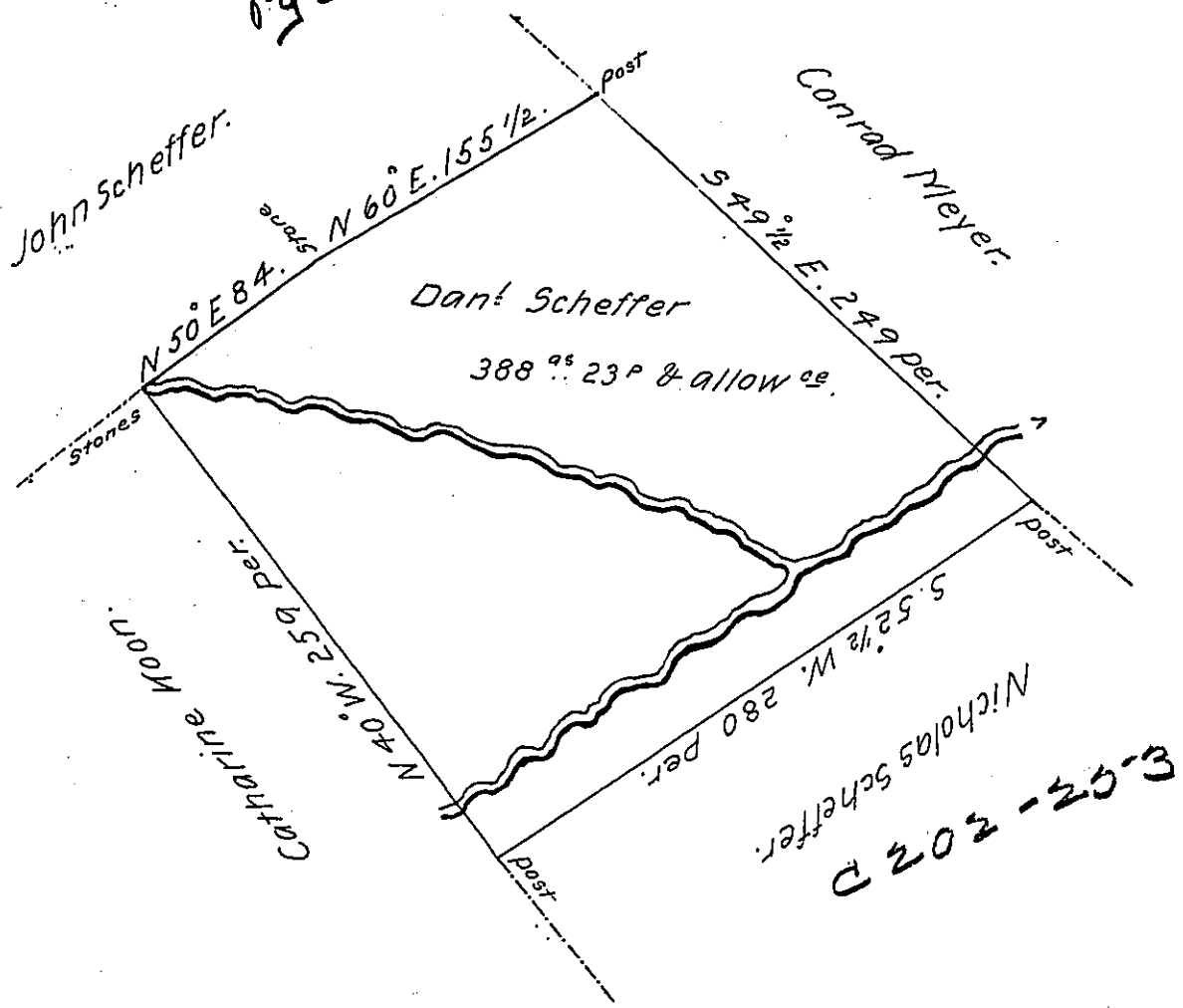


Pg 34



Situate in Middle Paxton township Dauphi- County Containing
 three hundred & Eighty Eight acres & twenty three perches & allow^{ce}

Surveyed on the 27th day of June 1795 for Daniel Scheffer by his Warrant of
 the 3rd of April 1794 by Bartram Galbraith late D.S. as appears by his
 Draught of the same which I have Examined & found Correct.

Levi G. Hollingsworth D.S.

To Sam^l Cochran Esq^r

Surveyor Gen^l of penn^a

IN TESTIMONY that the above is a copy of the original remaining on file in
 the Department of Internal Affairs of Pennsylvania, made
 conformably to an Act of Assembly approved the 16th day of
 February 1833, I have hereunto set my hand and caused
 the Seal of said Department to be affixed at Harrisburg,
 this Twenty Sixth day of December 1906

Levi G. Hollingsworth
 Secretary of Internal Affairs.